

# Woodstock General Hospital

## The Making of a Hospital



# Construction Underway!

- January, 2008 Infrastructure Ontario announced that the Woodstock Hospital project was released for tender
- 3 companies submitted proposals to Build/Finance/Manage the new hospital
- Contract was awarded to ITS (EllisDon, Honeywell, Fengate Capital Management and LPF Infrastructure Fund)



# November Groundbreaking Community Celebrates with the Honourable George Smitherman

October 2008 - Construction Starts

June 2011 - Substantial completion

November 2011 - Estimated opening

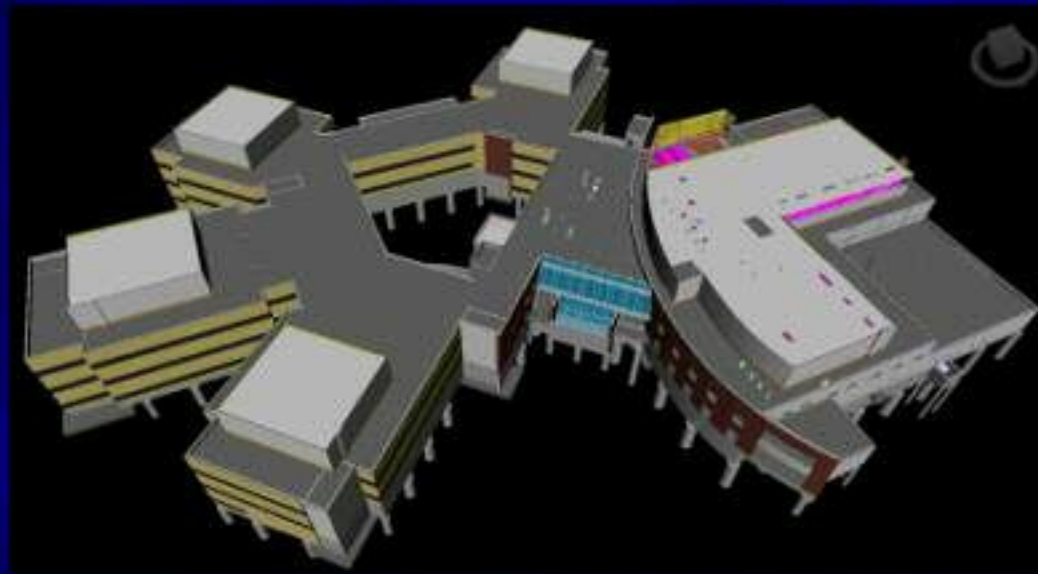


Athlone Avenue



Juliana Drive

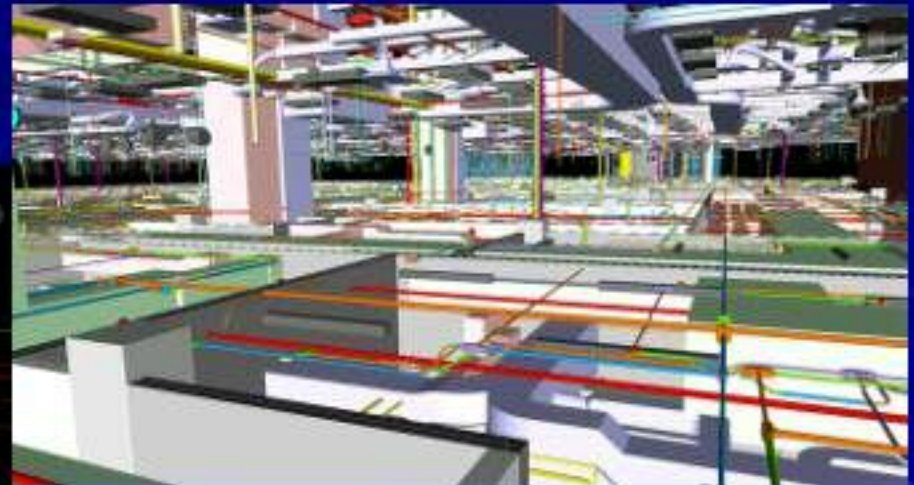
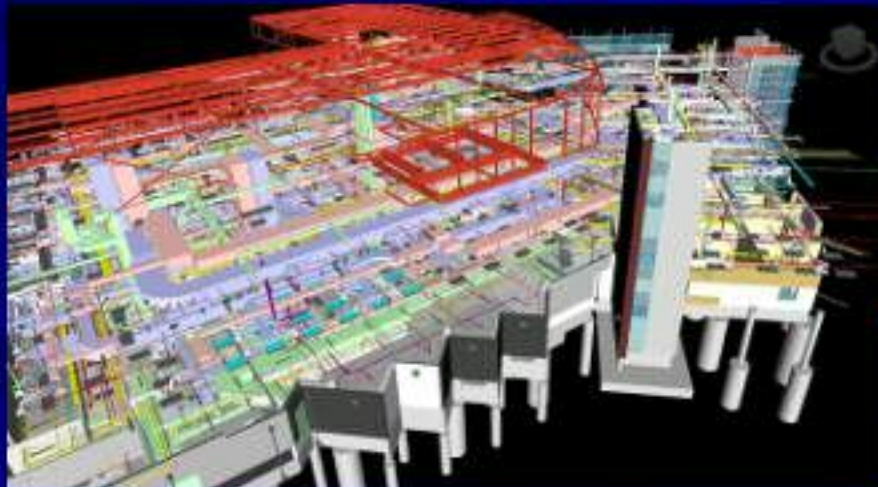
# Building Information Modeling



- 1<sup>st</sup> EllisDon project to use this technology
- 3D model that outlines the flow of electrical, gas and heating services

# B.I.M.

- Technology is used to accurately predict costs, appearance, performance and environmental impact



# Features of the new hospital

- A new 22-bed inpatient Rehabilitation Unit, allows stroke, accident victims and other recovering patients to regain life skills
- The Diagnostic Imaging Department (DI) will double in size, with the latest digital imaging technology including plans for an MRI
- Five operating theatres
- 178 Beds – 350,000 sq ft.
- Heliport
- Increased ER department featuring a fast track area



# Features of the new hospital

- Enlarged Complex Continuing Care Unit
- A Maternal/Child/Women's Health unit
- Increased Mental Health services – inpatient and outpatient
- Enlarged Dialysis Unit
- Family waiting rooms on each floor



# Features of the new hospital

- During the waiting period a new wing was added gaining 30,000 sq. feet resulting in more room for inpatient and outpatient services
- Hospital plans still include room for expansion



## Features of new hospital

- Over 60% of patient rooms are private, with the remainder semi-private. All patient rooms include bathrooms, complete with showers.

